



Tallyn's Reach Library

August 13, 2019

6 PM – 8 PM

SE Aurora Transportation Projects OPEN HOUSE

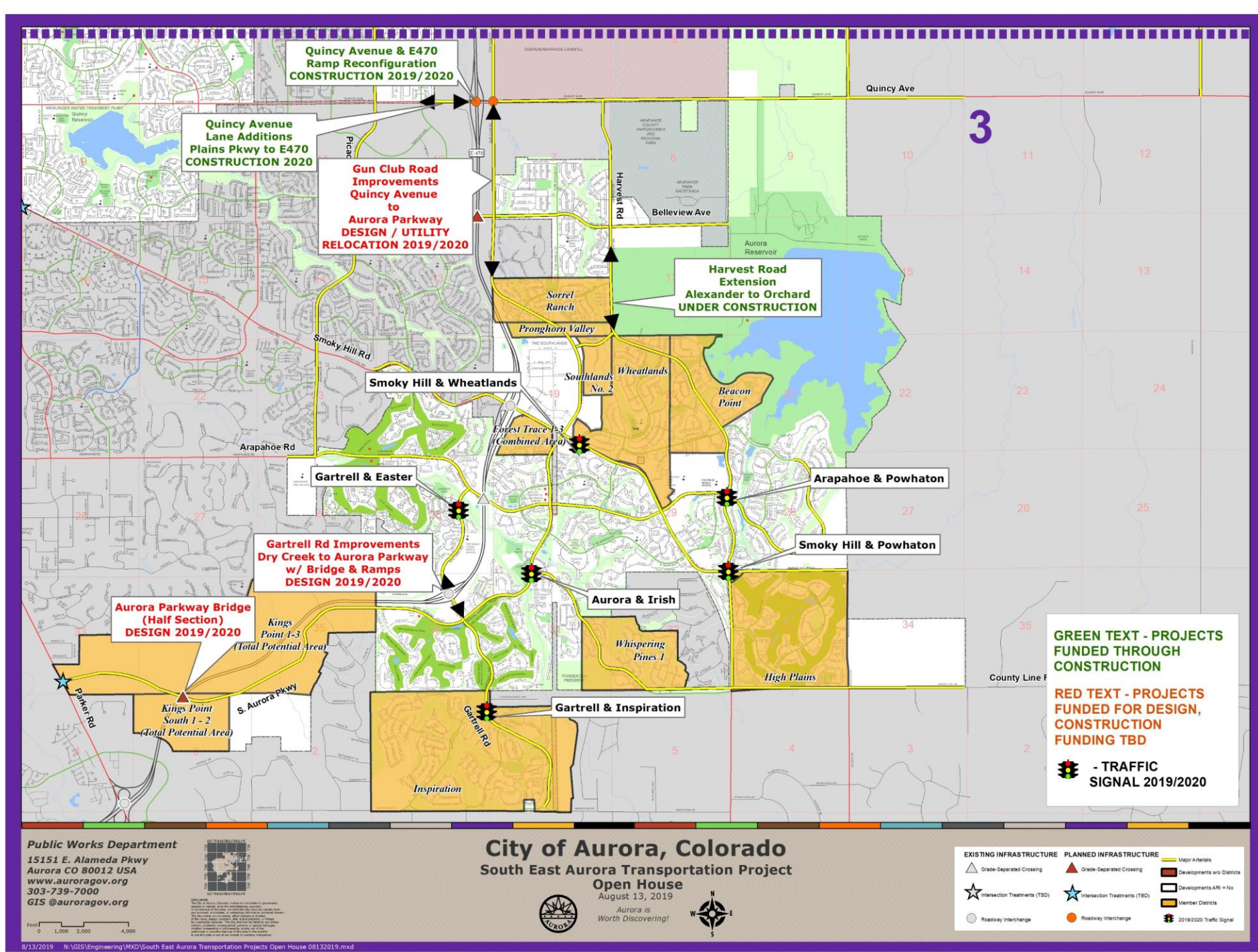


Hosted: Aurora Public Works Department

Participating Partners: Arapahoe County & E470



REGIONAL PROJECT OVERVIEW MAP



What is SARIA?



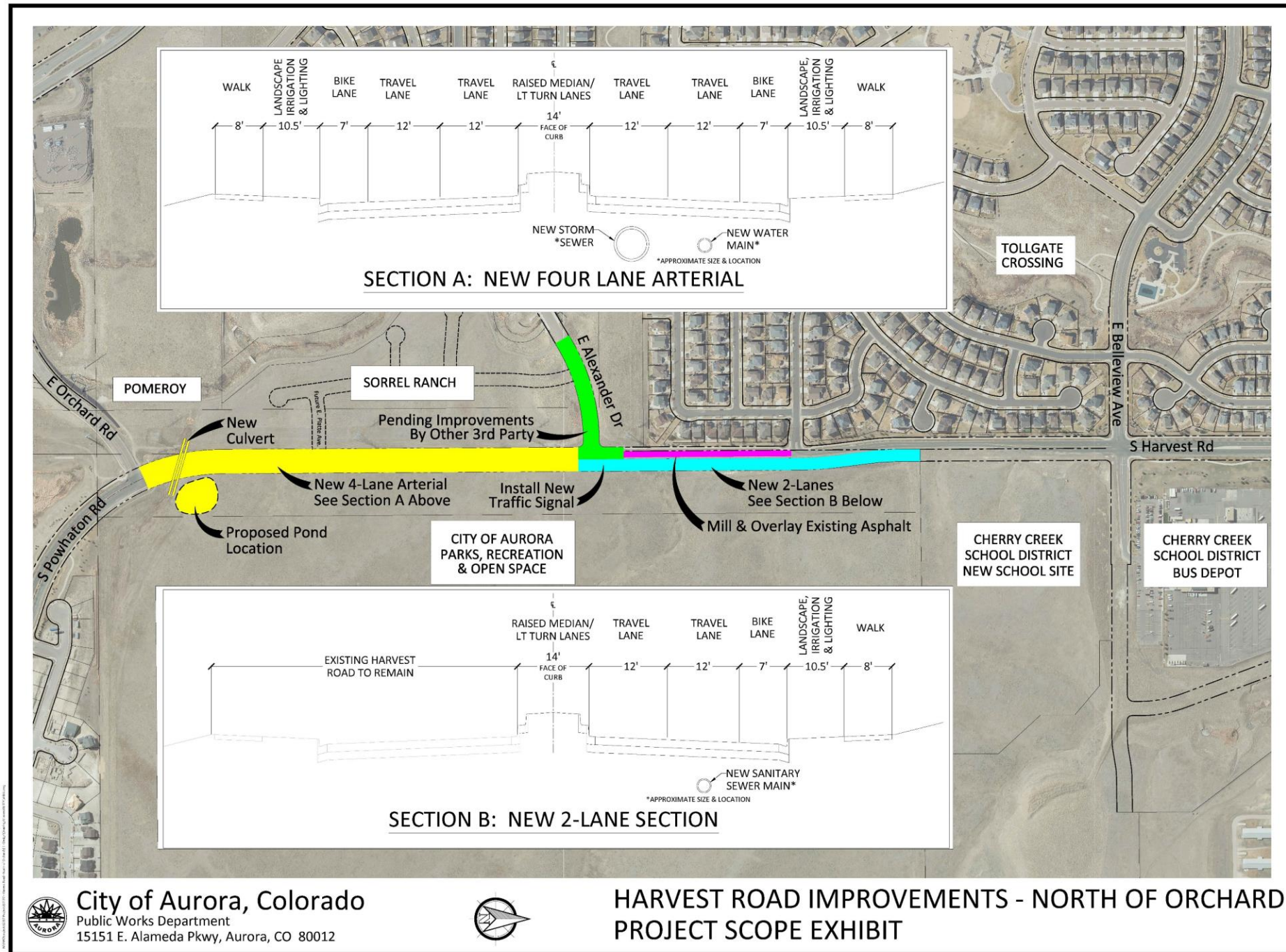
- South Aurora Regional Improvement Authority
- Cooperative of Metro Districts in southeast Aurora created to finance regional transportation improvements
- Identifies projects w/ Aurora Public Works Department
- Partners with other agencies like Arapahoe County & E470

HARVEST ROAD EXTENSION

Project to extend & complete 4-lane section of Harvest Road from Orchard to Belleview

Under Construction Now

Completion early 2020



QUINCY / GUN CLUB PCFI

Project to construct Partial
Continuous Flow
Intersection

Construction Starting Soon

Arapahoe County Project



E470 RAMP RELOCATION

Project to increase traffic
performance by relocation
of northbound ramps

Construction Starting Soon

E470 Project



QUINCY LANE ADDITIONS

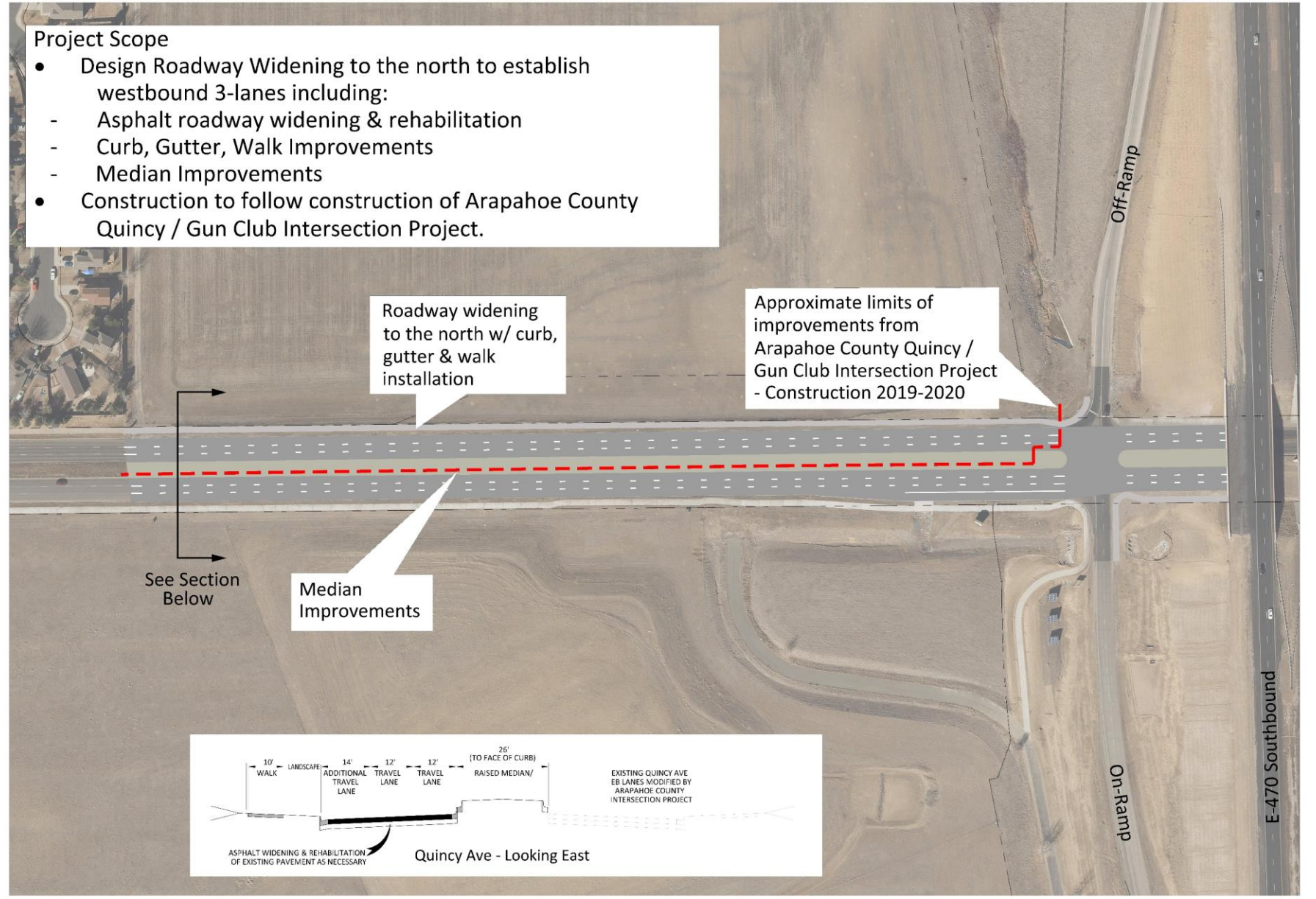
Project to complete 6-lane roadway section west of E470

Fully Funded Project

Construction to follow Quincy/Gun Club Intersection & Ramp Relocation Projects

Construction 2020

- Project Scope**
- Design Roadway Widening to the north to establish westbound 3-lanes including:
 - Asphalt roadway widening & rehabilitation
 - Curb, Gutter, Walk Improvements
 - Median Improvements
 - Construction to follow construction of Arapahoe County Quincy / Gun Club Intersection Project.



GUN CLUB ROAD IMPROVEMENTS

Project to design 4-lane section (expandable to future 6-lane) of Gun Club Road from Aurora Parkway to Quincy Avenue

Project only funded for design & utility relocation

Significant utility relocation anticipated

Construction TBD



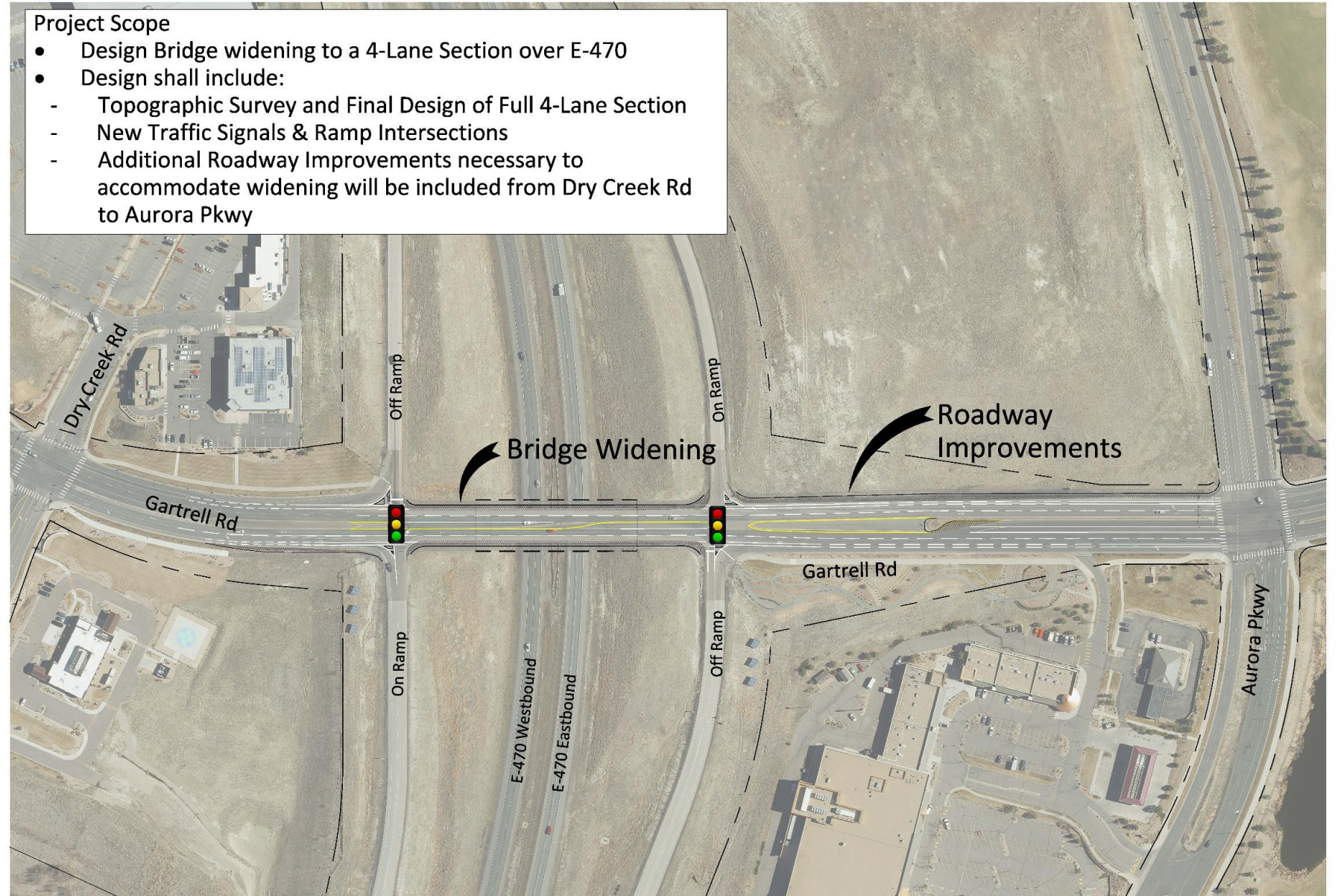
GARTRELL BRIDGE WIDENING

Project to design 5-lane
roadway section over E470

**Project only funded for
design**

Construction TBD

- Project Scope
- Design Bridge widening to a 4-Lane Section over E-470
 - Design shall include:
 - Topographic Survey and Final Design of Full 4-Lane Section
 - New Traffic Signals & Ramp Intersections
 - Additional Roadway Improvements necessary to accommodate widening will be included from Dry Creek Rd to Aurora Pkwy



City of Aurora, Colorado
Public Works Department
15151 E. Alameda Pkwy, Aurora, CO 80012



Gartrell Road Improvements
Dry Creek Rd to Aurora Pkwy

AURORA PARKWAY BRIDGE

Project to design bridge over E470 for future Aurora Parkway extension to Parker Road

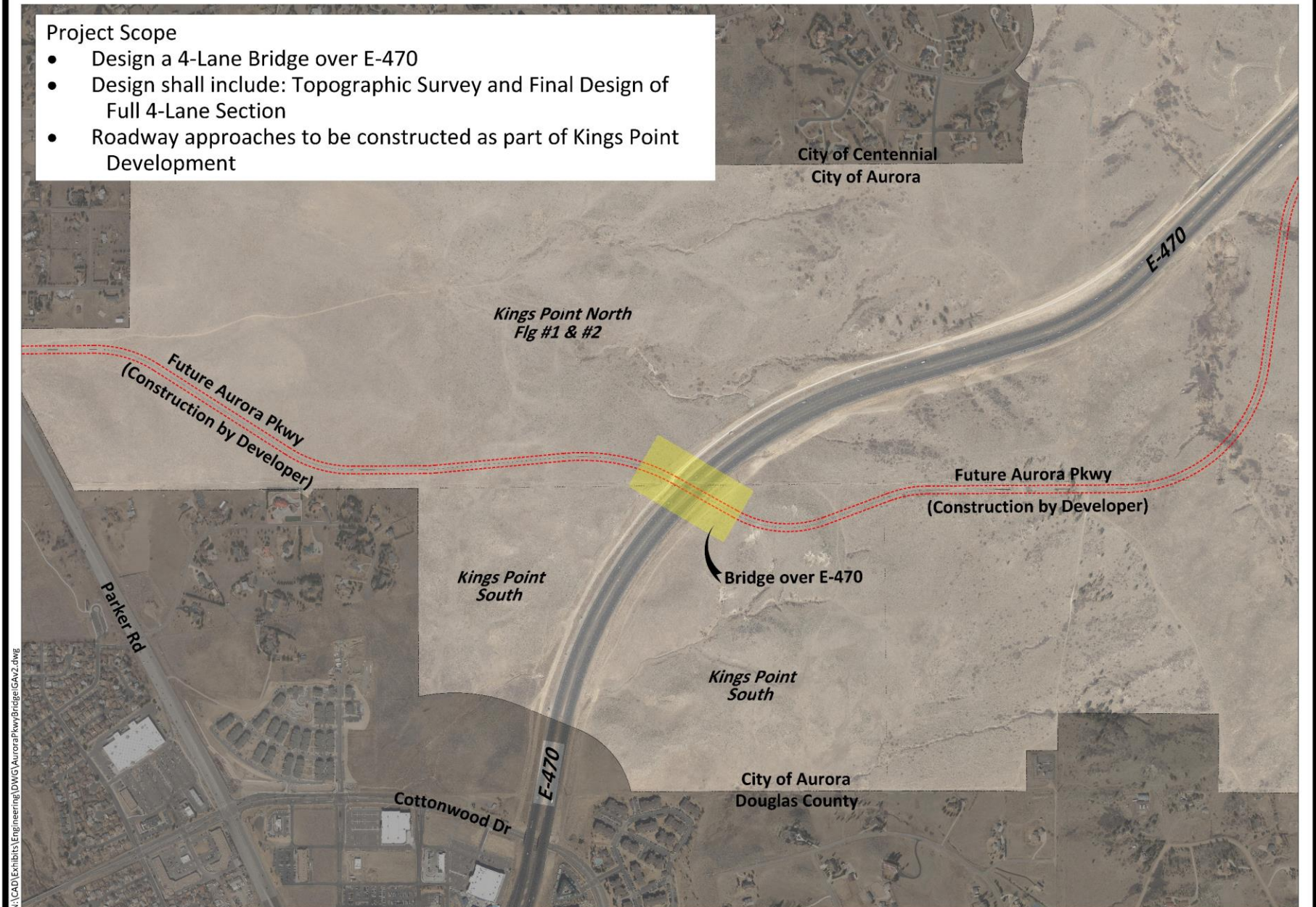
Project only funded for design

Developer is obligated to construct Aurora Parkway on either side of bridge

Construction TBD

Project Scope

- Design a 4-Lane Bridge over E-470
- Design shall include: Topographic Survey and Final Design of Full 4-Lane Section
- Roadway approaches to be constructed as part of Kings Point Development



City of Aurora, Colorado
Public Works Department
15151 E. Alameda Pkwy, Aurora, CO 80012



N.T.S.

Aurora Parkway Bridge over E470